



PRODUCT CATALOGUE

2023/24 EDITION



**NEW ZEALAND'S EXPERTS IN CUSTOM ENGINEERING
AND MANUFACTURING FOR MORE THAN 45 YEARS.**

www.roadrunnerltd.co.nz



**THE TEAM AT
ROADRUNNER
MANUFACTURING HAVE
BEEN NEW ZEALAND'S
EXPERTS IN CUSTOM
ENGINEERING AND
MANUFACTURING
FOR MORE THAN
45 YEARS.**



Based in Bulls, we specialise in manufacturing aluminium, steel and stainless steel ancillary equipment for the transport, marine and agriculture industries and more recently renewable energy component enclosures. Our extensive range of products and solid reputation for quality and service has secured our position as the preferred custom engineering and manufacturing company in New Zealand.

All Roadrunner products are manufactured in our purpose-built workshop and can be shipped throughout New Zealand and internationally.

This product catalogue is a guide to our extensive range of high-quality products, but at Roadrunner, nothing is limited to what's on the shelf. If what you see isn't quite what you're after, simply contact us and we'll be happy to help. We also keep a range of standard stock items on our shelves.

With Roadrunner you are guaranteed to have a product that meets your requirements exactly – from small factory runs, one-offs, to large volume manufacturing, we have you covered.

On our website www.roadrunnerltd.co.nz you can request a quote or place an order. Alternatively, you can contact us at the details below for more information.

info@roadrunnerltd.co.nz
(06) 322 1575

CONTENTS

MEET THE ROADRUNNER TEAM	2
STANDARD STOCK	3
TOOLBOXES	5
Square	
Tapered Front	
HYDRAULIC TANKS	11
Square	
Oval/Square	
Round	
FUEL TANKS	14
Square	
Oval/Square	
Round	
Dangerous Goods	
COMBINATION TANKS	17
Oval/Square	
Round	
Dangerous Goods	
AIR TANKS	21
WATER TANKS	22
REFUELLING TANKS	23
EFFLUENT TANK STORAGE	24
UTE AND SERVICE BOXES	25
DOG BOXES	26
POOL COVER BOXES	27
PARTS AND ACCESSORIES	28
BRACKETS AND STRAPS	30
CUSTOM MANUFACTURING + CASE STUDY	32
OMAX ABRASIVE WATERJETS + CASE STUDY	36

MEET THE ROADRUNNER TEAM

AT ROADRUNNER WE SPECIALISE IN CUSTOM ENGINEERING AND MANUFACTURING TO MEET YOUR NEEDS AND WE HAVE THE EXPERIENCE IN OUR TEAM TO ENSURE THAT WE CAN DELIVER, EVERY TIME.

Our local, professional fabricators and welders are passionate about what they do and whether it's a small factory run, a standard stocked product or a custom one-off design and build – we will build to your requirements and work hard to ensure the outcome is everything you expected.



NICK WEBSTER – GENERAL MANAGER

Nick has been a part of Roadrunner for over 20 years starting back in 2003 when his apprenticeship began. A hands-on General Manager, Nick's focus is on the manufacturing side of the business and his knowledge of the Roadrunner range of aluminium fabricated and custom-built products is second- to-none.



MATT AVERY – WATERJETS & OPERATIONS MANAGER

Matt is an engineer by trade with 20+ years' experience behind him, his key focus in the business is on the OMAX Waterjet side where he has become an expert in Abrasive Waterjet Systems. He has an extensive mechanical knowledge and understanding of their operating systems and capabilities which puts him in a great position to assist customers install and get the most out of their machines.



STEVE TUNNICLIFFE – SALES AND PRODUCTION

Steve has been with Roadrunner for more than five years following a 27-year stint in the automotive industry. Steve's role within the business is dealing with all things manufacturing including communicating quotes, costs and lead times to customers, processing orders, providing job spec sheets/sketches/drawings/costings, and estimated job duration for fabricators, ordering materials and making sure all the guys in the workshop are keeping to deadline.



KEIRAN JENKINS – SALES AND PRODUCTION

Keiran has been at Roadrunner for four years and has worked his way up from the factory floor to join the sales and production team. Keiran's role involves all things manufacturing and design as well as assisting in waterjet installation. Keiran works closely with Steve to ensure our customers specific requirements are met and he has a passion for associated design challenges that Roadrunner faces with custom design and manufacturing.



The team at Roadrunner Manufacturing.

STANDARD STOCK

ROADRUNNER MANUFACTURING NOW STOCK STANDARD SIZES ACROSS OUR TOOLBOX, HYDRAULIC TANK, AND WATER TANK PRODUCT RANGES.

To support our customers with quicker turnaround times and availability of stock – we have standard sized stock on our shelves ready for delivery.

Standard Size Options for Square Toolboxes (3mm Alu)				
PART #	HEIGHT	DEPTH	LENGTH	DOORS
STB900	350mm	400mm	500mm (H)	Single, Stainless Steel
STB901	400mm	500mm	600mm (H)	Single, Stainless Steel
STB902	500mm	500mm	800mm (H)	Single, Stainless Steel
STB003	500mm (H)	500mm	500mm	Single, Stainless Steel
STB222	600mm (H)	600mm	600mm	Single, Stainless Steel
STB905	400mm (H)	500mm	900mm	Double, Stainless Steel
STB102	500mm (H)	500mm	1200mm	Double, Stainless Steel
STB302	600mm (H)	600mm	1200mm	Double, Stainless Steel

(H) Hinge placement.



STB900, STB901 and STB902 Square Toolboxes.



120L and 140L Round Hydraulic Tanks.

Standard Options for Round Hydraulic Tanks*		
PART #	USABLE CAPACITY	DIMENSIONS
SHYTR120F	120 Litres	Ø 635mm x 400mm Long
SHYTR140F	140 Litres	Ø 635mm x 475mm Long

Standard Options for Oval Square Hydraulic Tanks*				
PART #	USABLE CAPACITY	HEIGHT	DEPTH	LENGTH
SHYTO120F	120 Litres	630mm	680mm	340mm
SHYTO140F	140 Litres	630mm	680mm	400mm
SHYTO160F	160 Litres	630mm	680mm	460mm

*Note all Hydraulic Tanks come with a 1/4" BSP Return Line Filter, 1/4" BSP Suction Line Fitting and a Chrome Filler Breather.



120L, 140L and 160L Oval Square Hydraulic Tanks.



Brackets	
PART #	DESCRIPTION
SHYTMB-P	Primed Single Mount Hydraulic Bracket, Stainless Steel Straps

Standard Options for Air Tanks				
PART #	VOLUME	DIAMETER	LENGTH*	PORTS
SAT62	10 Litres	190mm	490mm	3/8" BSP each end, 1/4" BSP Drain
SAT63	25 Litres	266mm	580mm	3/8" BSP LH end, 1 x 3/4" NPT, 1/4" BSP Drain
SAT21	32 Litres	266mm	710mm	3/8" BSP LH end, 1 x 3/4" NPT, 1/4" BSP Drain
SAT20	40 Litres	266mm	860mm	3/8" BSP LH end, 2 x 3/4" NPT, 1/4" BSP Drain
SAT17	42 Litres	266mm	900mm	3/8" BSP each end, 3 x 3/4" NPT, 1/4" BSP Drain
SAT18	47 Litres	300mm	820mm	3/8" BSP each end, 3 x 3/4" NPT, 1/4" BSP Drain
SAT70	50 Litres	350mm	680mm	3/8" BSP each end, 3 x 3/4" NPT, 1/4" BSP Drain

*Note all lengths include Mounting Brackets which are 50mm each end.



40L, 32L and 25L Air Tanks.



SWT-02 Water Tank.

Standard Options for Round Water Tanks*			
PART #	DIAMETER	LENGTH	VOLUME
SWT-01	190mm	440mm	11 Litres
SWT-02	266mm	325mm	16 Litres

*Note all Water Tanks have Brackets supplied loose.



CALL US
to find out more or to order
standard stock now!



ROADRUNNER ALUMINIUM TOOLBOXES ARE MANUFACTURED TO SUIT ANY APPLICATION, FROM YOUR TRUCK OR TRAILER TO FIELD SERVICE VEHICLE.

Choose from our extensive range of Toolbox sizes in either the square or tapered front shape, or let us custom make exactly what you need.

STANDARD SPECIFICATIONS

- Manufactured from 3mm or 4mm aluminium
- Continuous aluminium hinge with stainless steel pin
- Sponge door seal
- Lockable stainless steel 'T' Handle latch
- Square toolboxes can have single or double doors that are hinged side, top, or bottom
- Tapered toolboxes can be hinged top or bottom

CUSTOM DESIGN OPTIONS

- Different material thickness and size options available
- Aluminium, steel or stainless steel
- Painting, powder coating, signwriting or a complete wrap
- Single, double or multiple door options
- Treadplate options
- Hinges - weld on or continuous 'B' hinge
- Latches - S/S T-Handle (lockable), trigger flush lock or anti-luce
- Door supports – gas stays, chains or wire rope
- Shelves, pull out drawers, partitions

BENEFITS OF A ROADRUNNER TOOLBOX

Hinge weight: Equal weight supports the door which spreads the weight of the door over the entire hinge, as opposed to two hinges being overloaded with weight. This protects the structural integrity of the door and the longevity of your asset.

Water resistant: All boxes are designed and manufactured here and are specific to New Zealand road and weather conditions.

Custom-design: The option to customise means that instead of trying to make a standard product work to your needs and having to compromise on some of them, you can have a product that solves your problems and meets your specs.

Virtually indestructible: They have been individually tested and road-tested for New Zealand conditions.

Stock availability: As a rule, our most popular products are held in stock or are available overnight.

Value-Add: Choosing a robust, durable, New Zealand made product might enable you to hold on price for longer in terms of vehicle value or add to the sale value or sale leverage down the line.



Double Door Toolbox.

Get a quote or place order:
[www.roadrunnerltd.co.nz](http://www.roadrunnerltd.co.nz/shop/toolboxes)
[/shop/toolboxes](http://shop/toolboxes)

Toolbox Size: 500H x 500D; Length 500mm

PART #		BODY	DOOR	DETAILS
SQUARE	TAPERED			
TB001	TB600	3mm	Alu	Single door; Hinge top or bottom (or side for square option).
TB002	TB601	3mm	Alu	Single door; Hinge top or bottom (or side for square option); Shelf.
TB003	TB602	3mm	S/S	Single door; Hinge top or bottom (or side for square option).
TB004	TB603	3mm	S/S	Single door; Hinge top or bottom (or side for square option); Shelf.
TB005	TB604	4mm	Alu	Single door; Hinge top or bottom (or side for square option).
TB006	TB605	4mm	Alu	Single door; Hinge top or bottom (or side for square option); Shelf.
TB007	TB606	4mm	S/S	Single door; Hinge top or bottom (or side for square option).
TB008	TB607	4mm	S/S	Single door; Hinge top or bottom (or side for square option); Shelf.

Toolbox Size: 500H x 500D; Length 600mm

PART #		BODY	DOOR	DETAILS
SQUARE	TAPERED			
TB020	TB620	3mm	Alu	Single door; Hinge top or bottom (or side for square option).
TB021	TB621	3mm	Alu	Single door; Hinge top or bottom (or side for square option); Shelf.
TB022	TB622	3mm	S/S	Single door; Hinge top or bottom (or side for square option).
TB023	TB623	3mm	S/S	Single door; Hinge top or bottom (or side for square option); Shelf.
TB024	TB624	4mm	Alu	Single door; Hinge top or bottom (or side for square option).
TB025	TB625	4mm	Alu	Single door; Hinge top or bottom (or side for square option); Shelf.
TB026	TB626	4mm	S/S	Single door; Hinge top or bottom (or side for square option).
TB027	TB627	4mm	S/S	Single door; Hinge top or bottom (or side for square option); Shelf.



Square Single Door Toolboxes.



Tapered Front Toolbox.



Square Double Door Toolbox.

Toolbox Size: 500H x 500D; Length 900mm

PART #		BODY	DOOR	DETAILS
SQUARE	TAPERED			
TB040	TB640	3mm	Alu	Single door; Hinge top or bottom.
TB041	TB641	3mm	Alu	Single door; Hinge top or bottom; Shelf.
TB042	TB642	3mm	S/S	Single door; Hinge top or bottom.
TB043	TB643	3mm	S/S	Single door; Hinge top or bottom; Shelf.
TB044	TB644	4mm	Alu	Single door; Hinge top or bottom.
TB045	TB645	4mm	Alu	Single door; Hinge top or bottom; Shelf.
TB046	TB646	4mm	S/S	Single door; Hinge top or bottom.
TB047	TB647	4mm	S/S	Single door; Hinge top or bottom; Shelf.
TB060	N/A	3mm	Alu	Double doors; Hinge left & right.
TB061	N/A	3mm	Alu	Double doors; Hinge left & right; Shelf.
TB062	N/A	3mm	S/S	Double doors; Hinge left & right.
TB063	N/A	3mm	S/S	Double doors; Hinge left & right; Shelf.
TB064	N/A	4mm	Alu	Double doors; Hinge left & right.
TB065	N/A	4mm	Alu	Double doors; Hinge left & right; Shelf.
TB066	N/A	4mm	S/S	Double doors; Hinge left & right.
TB067	N/A	4mm	S/S	Double doors; Hinge left & right; Shelf.

Toolbox Size: 500H x 500D; Length 1200mm

PART #		BODY	DOOR	DETAILS
SQUARE	TAPERED			
TB080	TB660	3mm	Alu	Single door; Hinge top or bottom.
TB081	TB661	3mm	Alu	Single door; Hinge top or bottom; Shelf.
TB082	TB662	3mm	S/S	Single door; Hinge top or bottom.
TB083	TB663	3mm	S/S	Single door; Hinge top or bottom; Shelf.
TB084	TB664	4mm	Alu	Single door; Hinge top or bottom.
TB085	TB665	4mm	Alu	Single door; Hinge top or bottom; Shelf.
TB086	TB666	4mm	S/S	Single door; Hinge top or bottom.
TB087	TB667	4mm	S/S	Single door; Hinge top or bottom; Shelf.
TB100	N/A	3mm	Alu	Double doors; Hinge left & right.
TB101	N/A	3mm	Alu	Double doors; Hinge left & right; Shelf.
TB102	N/A	3mm	S/S	Double doors; Hinge left & right.
TB103	N/A	3mm	S/S	Double doors; Hinge left & right; Shelf.
TB104	N/A	4mm	Alu	Double doors; Hinge left & right.
TB105	N/A	4mm	Alu	Double doors; Hinge left & right; Shelf.
TB106	N/A	4mm	S/S	Double doors; Hinge left & right.
TB107	N/A	4mm	S/S	Double doors; Hinge left & right; Shelf.

Toolbox Size: 500H x 500D; Length 1500mm

PART #	BODY	DOOR	DETAILS
SQUARE			
TB120	3mm	Alu	Single door; Hinge top or bottom.
TB121	3mm	Alu	Single door; Hinge top or bottom; Shelf.
TB122	3mm	S/S	Single door; Hinge top or bottom.
TB123	3mm	S/S	Single door; Hinge top or bottom; Shelf.
TB124	4mm	Alu	Single door; Hinge top or bottom.
TB125	4mm	Alu	Single door; Hinge top or bottom; Shelf.
TB126	4mm	S/S	Single door; Hinge top or bottom.
TB127	4mm	S/S	Single door; Hinge top or bottom; Shelf.
TB140	3mm	Alu	Double doors; Hinge left & right.
TB141	3mm	Alu	Double doors; Hinge left & right; Shelf.
TB142	3mm	S/S	Double doors; Hinge left & right.
TB143	3mm	S/S	Double doors; Hinge left & right; Shelf.
TB144	4mm	Alu	Double doors; Hinge left & right.
TB145	4mm	Alu	Double doors; Hinge left & right; Shelf.
TB146	4mm	S/S	Double doors; Hinge left & right.
TB147	4mm	S/S	Double doors; Hinge left & right; Shelf.

Toolbox Size: 600H x 600D; Length 500mm

PART #		BODY	DOOR	DETAILS
SQUARE	TAPERED			
TB200	TB800	3mm	Alu	Single door; Hinge top or bottom (or side for square option).
TB201	TB801	3mm	Alu	Single door; Hinge top or bottom (or side for square option); Shelf.
TB202	TB802	3mm	S/S	Single door; Hinge top or bottom (or side for square option).
TB203	TB803	3mm	S/S	Single door; Hinge top or bottom (or side for square option); Shelf.
TB204	TB804	4mm	Alu	Single door; Hinge top or bottom (or side for square option).
TB205	TB805	4mm	Alu	Single door; Hinge top or bottom (or side for square option); Shelf.
TB206	TB806	4mm	S/S	Single door; Hinge top or bottom (or side for square option).
TB207	TB807	4mm	S/S	Single door; Hinge top or bottom (or side for square option); Shelf.



Double Door Toolbox.

Toolbox Size: 600H x 600D; Length 600mm

PART #		BODY	DOOR	DETAILS
SQUARE	TAPERED			
TB220	TB820	3mm	Alu	Single door; Hinge top or bottom (or side for square option).
TB221	TB821	3mm	Alu	Single door; Hinge top or bottom (or side for square option); Shelf.
TB222	TB822	3mm	S/S	Single door; Hinge top or bottom (or side for square option).
TB223	TB823	3mm	S/S	Single door; Hinge top or bottom (or side for square option); Shelf.
TB224	TB824	4mm	Alu	Single door; Hinge top or bottom (or side for square option).
TB225	TB825	4mm	Alu	Single door; Hinge top or bottom (or side for square option); Shelf.
TB226	TB826	4mm	S/S	Single door; Hinge top or bottom (or side for square option).
TB227	TB827	4mm	S/S	Single door; Hinge top or bottom (or side for square option); Shelf.

Toolbox Size: 600H x 600D; Length 900mm

PART #		BODY	DOOR	DETAILS
SQUARE	TAPERED			
TB240	TB840	3mm	Alu	Single door; Hinge top or bottom.
TB241	TB841	3mm	Alu	Single door; Hinge top or bottom; Shelf.
TB242	TB842	3mm	S/S	Single door; Hinge top or bottom.
TB243	TB843	3mm	S/S	Single door; Hinge top or bottom; Shelf.
TB244	TB844	4mm	Alu	Single door; Hinge top or bottom.
TB245	TB845	4mm	Alu	Single door; Hinge top or bottom; Shelf.
TB246	TB846	4mm	S/S	Single door; Hinge top or bottom.
TB247	TB847	4mm	S/S	Single door; Hinge top or bottom; Shelf.
TB260	N/A	3mm	Alu	Double doors; Hinge left & right.
TB261	N/A	3mm	Alu	Double doors; Hinge left & right; Shelf.
TB262	N/A	3mm	S/S	Double doors; Hinge left & right.
TB263	N/A	3mm	S/S	Double doors; Hinge left & right; Shelf.
TB264	N/A	4mm	Alu	Double doors; Hinge left & right.
TB265	N/A	4mm	Alu	Double doors; Hinge left & right; Shelf.
TB266	N/A	4mm	S/S	Double doors; Hinge left & right.
TB267	N/A	4mm	S/S	Double doors; Hinge left & right; Shelf.



Custom Square Toolbox with single door.

Toolbox Size: 600H x 600D; Length 1200mm

PART #		BODY	DOOR	DETAILS
SQUARE	TAPERED			
TB280	TB860	3mm	Alu	Single door; Hinge top or bottom.
TB281	TB861	3mm	Alu	Single door; Hinge top or bottom; Shelf.
TB282	TB862	3mm	S/S	Single door; Hinge top or bottom.
TB283	TB863	3mm	S/S	Single door; Hinge top or bottom; Shelf.
TB284	TB864	4mm	Alu	Single door; Hinge top or bottom.
TB285	TB865	4mm	Alu	Single door; Hinge top or bottom; Shelf.
TB286	TB866	4mm	S/S	Single door; Hinge top or bottom.
TB287	TB867	4mm	S/S	Single door; Hinge top or bottom; Shelf.
TB300	N/A	3mm	Alu	Double doors; Hinge left & right.
TB301	N/A	3mm	Alu	Double doors; Hinge left & right; Shelf.
TB302	N/A	3mm	S/S	Double doors; Hinge left & right.
TB303	N/A	3mm	S/S	Double doors; Hinge left & right; Shelf.
TB304	N/A	4mm	Alu	Double doors; Hinge left & right.
TB305	N/A	4mm	Alu	Double doors; Hinge left & right; Shelf.
TB306	N/A	4mm	S/S	Double doors; Hinge left & right.
TB307	N/A	4mm	S/S	Double doors; Hinge left & right; Shelf.

Toolbox Size: 600H x 600D; Length 1500mm

PART #		BODY	DOOR	DETAILS
SQUARE	TAPERED			
TB320	TB880	3mm	Alu	Single door; Hinge top or bottom.
TB321	TB881	3mm	Alu	Single door; Hinge top or bottom; Shelf.
TB322	TB882	3mm	S/S	Single door; Hinge top or bottom.
TB323	TB883	3mm	S/S	Single door; Hinge top or bottom; Shelf.
TB324	TB884	4mm	Alu	Single door; Hinge top or bottom.
TB325	TB885	4mm	Alu	Single door; Hinge top or bottom; Shelf.
TB326	TB886	4mm	S/S	Single door; Hinge top or bottom.
TB327	TB887	4mm	S/S	Single door; Hinge top or bottom; Shelf.
TB340	N/A	3mm	Alu	Double doors; Hinge left & right.
TB341	N/A	3mm	Alu	Double doors; Hinge left & right; Shelf.
TB342	N/A	3mm	S/S	Double doors; Hinge left & right.
TB343	N/A	3mm	S/S	Double doors; Hinge left & right; Shelf.
TB344	N/A	4mm	Alu	Double doors; Hinge left & right.
TB345	N/A	4mm	Alu	Double doors; Hinge left & right; Shelf.
TB346	N/A	4mm	S/S	Double doors; Hinge left & right.
TB347	N/A	4mm	S/S	Double doors; Hinge left & right; Shelf.



HYDRAULIC TANKS

ROADRUNNER ALUMINIUM HYDRAULIC TANKS ARE MADE TO ORDER IN ROUND, SQUARE, AND OVAL/SQUARE VARIATIONS, IN A WIDE RANGE OF SIZES.

As with all Roadrunner products, our Hydraulic Tank sizing specifications are a guide only. If they don't suit your needs, we are happy to help design and custom build an aluminium hydraulic tank that does.

SPECIFICATIONS

- Available with or without 1 ¼" tank top return line filter
- 1 ¼", 1 ½" or 2" BSP suction line fitting
- 1 ¼", 1 ½" or 2" BSP return line boss and diffuser (without filter)
- Chrome filler breather
- Round and oval/square tanks manufactured from 3mm aluminium
- Square tanks manufactured from 4mm aluminium

TANK MOUNTING BRACKETS AND STRAPS MANUFACTURED TO SUIT

- Brackets available with primed steel or painted black
- Straps only available in stainless steel

ADDITIONAL OPTIONS

- Tube type sight glass
- 5" level temperature sight glass
- Different size filters available on request
- Tapered front
- Locking chrome or non-locking alloy Filler Breathers

BENEFITS OF A ROADRUNNER HYDRAULIC TANK

Designed for New Zealand conditions: All our tanks are designed and manufactured here and are specific to New Zealand road and weather conditions.

Easy replication of damaged tanks: Tanks can get damaged on trucks from wear and tear or because of general usage/accidents. It can be costly because of time and import associated fees to have to replace them from overseas importers. Roadrunner can easily replicate and turnaround a replacement tank to exactly match the original.

Traceable: We can trace the production and journey of every product which means customers are assured with complete visibility. They won't have to deal with offshore importers and have less visibility as to where they are in the process.

Proven track record: Many tanks – especially imported ones – are not designed for New Zealand conditions and therefore face the risk of cracking, getting easily damaged or coming loose. Our process involves testing for these conditions and our one year warranty underpins that we believe in the longevity of our products.

Get a quote or place order:

[www.roadrunnerltd.co.nz
/shop/hydraulic-tanks](http://www.roadrunnerltd.co.nz/shop/hydraulic-tanks)

Square Hydraulic Tanks

PART #		USABLE CAPACITY	DIMENSIONS
WITH FILTER	WITHOUT FILTER		
HYTS80	HYTS80NF	80L	600D x 500H x 300mm Long
HYTS100	HYTS100NF	100L	600D x 500H x 400mm Long
HYTS120	HYTS120NF	120L	600D x 500H x 450mm Long
HYTS140	HYTS140NF	140L	600D x 500H x 500mm Long
HYTS160	HYTS160NF	160L	600D x 500H x 550mm Long
HYTS200	HYTS200NF	200L	600D x 600H x 600mm Long



Square Hydraulic Tanks with single mount brackets and stainless steel straps.

Oval/Square Hydraulic Tanks

PART #		USEABLE CAPACITY	DIMENSIONS
WITH FILTER	WITHOUT FILTER		
HYTO100F	N/A	108L	630H x 680D x 320mm Long
N/A	HYTO100NF	100L	630H x 680D x 300mm Long
HYTO100F1	N/A	108L	680H x 630D x 320mm Long
N/A	HYTO100NF1	100L	680H x 630D x 300mm Long
HYTO120F	HYTO120NF	120L	630H x 680D x 340mm Long
HYTO120F1	HYTO120NF1	120L	680H x 630D x 340mm Long
HYTO140F	HYTO140NF	140L	630H x 680D x 400mm Long
HYTO140F1	HYTO140NF1	140L	680H x 630D x 400mm Long
HYTO160F	HYTO160NF	160L	630H x 680D x 460mm Long
HYTO160F1	HYTO160NF1	160L	680H x 630D x 460mm Long
HYTO200F	HYTO200NF	200L	630H x 680D x 560mm Long
HYTO200F1	HYTO200NF1	200L	680H x 630D x 560mm Long



Oval Square Hydraulic Tanks with single mount brackets and stainless steel straps.

Round Hydraulic Tanks			
PART #		USEABLE CAPACITY	DIMENSIONS
WITH FILTER	WITHOUT FILTER		
N/A	HYTR80NF	80L	Ø 635 x 300mm Long
HYTR100F	HYTR100NF	100L	Ø 635 x 350mm Long
HYTR120F	HYTR120NF	120L	Ø 635 x 400mm Long
HYTR140F	HYTR140NF	140L	Ø 635 x 475mm Long
HYTR160F	HYTR160NF	160L	Ø 635 x 550mm Long
HYTR200F	HYTR200NF	200L	Ø 635 x 675mm Long



Round Hydraulic Tanks with single mount brackets and stainless steel straps.



Round Hydraulic Tank with two brackets.

Oval Square Hydraulic Tank with two brackets.

Square Hydraulic Tank with two brackets.



Custom Hydraulic Tank.

Custom 300L Hydraulic Tank with two brackets.

Custom Hydraulic Tank with sight glass.

FUEL TANKS



ROADRUNNER ALUMINIUM FUEL TANKS ARE MADE TO ORDER IN ROUND, SQUARE, AND OVAL/SQUARE VARIATIONS AND COME IN A WIDE RANGE OF SIZES.

As with all Roadrunner products, our Fuel Tank sizing specifications are a guide only. If they don't suit your needs, we are happy to help design and custom build a fuel tank that does.

SPECIFICATIONS

- Round and oval/square tanks manufactured from 3mm aluminium
- Square tanks manufactured from 4mm aluminium
- Dangerous goods tanks manufactured from 5mm aluminium
- Roadrunner steel insert filler neck and aluminium fuel cap
- Internal fuel surge baffles
- Sender mounting plate to suit existing sender
- Breather, 3/8" drain boss and plug

TANK MOUNTING BRACKETS AND STRAPS MANUFACTURED TO SUIT

- Brackets available with primed steel or painted black
- Straps only available in stainless steel

ADDITIONAL OPTIONS

- Locking or non-locking fuel caps in alloy or plastic
- Anti-roll bars
- Pick up pipes

BENEFITS OF A ROADRUNNER FUEL TANK

Individual testing: Tank testing is important to us because it gives us the peace of mind that every single piece we create has met our own internal quality assurance standards which means we are able to pass them onto you.

Added internal baffling: Means that our tanks can support fuel saving and help you to manage on-road costs with more predictability and consistency.

Thicker aluminium: Thicker grade aluminium means a stronger, more durable product that is less likely to dent/scuff or damage.



Oval Square Fuel Tank with black bracket and stainless steel straps.

Get a quote or place order:
[www.roadrunnerltd.co.nz](http://www.roadrunnerltd.co.nz/shop/fuel-tanks)
[/shop/fuel-tanks](http://www.roadrunnerltd.co.nz/shop/fuel-tanks)

Square Fuel Tanks

PART #		USABLE CAPACITY	DIMENSIONS
WITH VDO	WITH PICK UP PIPES		
FT130SQ	FT130PSQ	130L	482H x 482D x 610mm Long
FT196SQ	FT196PSQ	196L	405H x 520D x 1015mm Long
FT240SQ	FT240PSQ	240L	405H x 520D x 1240mm Long
FT308SQ	FT308PSQ	308L	520H x 520D x 1240mm Long
FT360SQ	FT360PSQ	360L	520H x 610D x 1240mm Long
FT400SQ	FT400PSQ	400L	570H x 730D x 1000mm Long
FT425SQ	FT425PSQ	425L	610H x 610D x 1240mm Long
FT500SQ	FT500PSQ	500L	650H x 600D x 1350mm Long



Square Fuel Tank with primed brackets and stainless steel straps.

Oval Square Fuel Tanks

PART #		USABLE CAPACITY	DIMENSIONS
WITH VDO	WITH PICK UP PIPES		
FT100-OSQ	FT100P-OSQ	100L	630H x 680D x 300mm Long
FT100-OSQ1	FT100P-OSQ1	100L	680H x 630D x 300mm Long
FT450-OSQ	FT450P-OSQ	450L	630H x 680D x 1240mm Long
FT450-OSQ1	FT450P-OSQ1	450L	680H x 630D x 1240mm Long
FT470-OSQ	FT470P-OSQ	470L	650H x 700D x 1240mm Long
FT470-OSQ1	FT470P-OSQ1	470L	700H x 650D x 1240mm Long
FT500-OSQ	FT500P-OSQ	500L	630H x 680D x 1400mm Long
FT500-OSQ1	FT500P-OSQ1	500L	680H x 630D x 1400mm Long
FT530-OSQ	FT530P-OSQ	530L	650H x 700D x 1400mm Long
FT530-OSQ1	FT530P-OSQ1	530L	700H x 650D x 1400mm Long

Round Fuel Tanks			
PART #		USABLE CAPACITY	DIMENSIONS
WITH VDO	WITH PICK UP PIPES		
FT130RO	FT130PRO	130L	380 Ø x 1240mm Long
FT190RO	FT190PRO	190L	460 Ø x 1240mm Long
FT290RO	FT290PRO	290L	570 Ø x 1240mm Long
FT360RO	FT360PRO	360L	635 Ø x 1240mm Long
FT390RO	FT390PRO	390L	660 Ø x 1240mm Long
FT444RO	FT444PRO	444L	635 Ø x 1540mm Long
FT450RO	FT450PRO	450L	710 Ø x 1240mm Long
FT480RO	FT480PRO	480L	660 Ø x 1540mm Long
FT560RO	N/A	560L	710 Ø x 1540mm Long



Round Fuel Tank without brackets or straps.

Dangerous Goods Fuel Tanks*			
PART #		USABLE CAPACITY	DIMENSIONS
WITH VDO	WITH PICK UP PIPES		
FT190DAN	FT190PDAN	190L	460 Ø x 1240mm Long
FT360DAN	N/A	360L	635 Ø x 1240mm Long
FT390DAN	FT390PDAN	390L	660 Ø x 1240mm Long
FT450DAN	FT450PDAN	450L	710 Ø x 1240mm Long
FT480DAN	N/A	480L	660 Ø x 1540mm Long

*Dangerous goods tanks are constructed to meet the New Zealand Tank Wagon Code and LPG Tank Wagon Code.

COMBINATION TANKS



ROADRUNNER ALUMINIUM COMBINATION FUEL/OIL TANKS ARE MADE TO ORDER IN ROUND AND OVAL/SQUARE VARIATIONS, IN A WIDE RANGE OF SIZES.

As with all Roadrunner products, our Combination Tank sizing specifications are a guide only. If they don't suit your needs, we are happy to help design and custom build a combination tank that does.

SPECIFICATIONS

- Split to your fuel/oil volume requirements
- Double baffles between fuel/oil tank
- Available with or without 1 ¼" tank top return line filter
- 1 ¼", 1 ½" or 2" BSP suction line fitting
- 1 ¼", 1 ½" or 2" BSP return line boss and diffuser (without filter)
- Chrome filler breather
- Standard tanks manufactured from 3mm aluminium
- Dangerous goods tanks manufactured from 5mm aluminium
- Internal fuel surge baffles
- Fuel gauge sender plate to suit chassis
- Breather, 3/8" drain boss and plug

TANK MOUNTING BRACKETS AND STRAPS MANUFACTURED TO SUIT

- Brackets available with primed steel or painted black
- Straps only available in stainless steel

ADDITIONAL OPTIONS

- Tube type sight glass
- 5" level temperature sight glass
- Different size filters available on request
- Locking or non-locking fuel caps in alloy or plastic
- Remote mount return line filter
- Locking chrome or non-locking alloy Filler Breathers

BENEFITS OF A ROADRUNNER COMBINATION TANK

Proven track record: Many tanks – especially imported ones – are not designed for New Zealand conditions and therefore face the risk of cracking, getting easily damaged or coming loose.

Internal baffling designed for application and strength: Internal baffling means added strength and liquid stability when on the move or traversing New Zealand's unique landscapes.

Added chassis room from combining two tanks:

This additional space – a design bonus because of combining tanks – means that our customers have more flexibility with their design.

Weight saving due to less brackets: Using less brackets will positively impact costs and durability and we think that is a real benefit (that many aren't aware of until we advise them).

Double baffling: Investing in our tanks means that customers are assured of an extra layer of protection for their fleet and their drivers.

Get a quote or place order:

[www.roadrunnerltd.co.nz
/shop/combination-tanks](http://www.roadrunnerltd.co.nz/shop/combination-tanks)

Oval Square Combination Tanks with VDO & No Pick Up Pipes			
PART #		USABLE CAPACITY*	DIMENSIONS
WITH FILTER	WITHOUT FILTER		
FT440COM-F	FT440COM-NF	440L	630H x 680D x 1240mm Long
FT440COM-F1	FT440COM-NF1	440L	680H x 630D x 1240mm Long
FT460COM-F	FT460COM-NF	460L	650H x 700D x 1240mm Long
FT460COM-F1	FT460COM-NF1	460L	700H x 650D x 1240mm Long
FT515COM-F	FT515COM-NF	515L	630H x 680D x 1400mm Long
FT515COM-F1	FT515COM-NF1	515L	680H x 630D x 1400mm Long
FT530COM-F	FT530COM-NF	530L	650H x 700D x 1400mm Long
FT530COM-F1	FT530COM-NF1	530L	700H x 650D x 1400mm Long

Oval Square Combination Tanks with Pick Up Pipes & No VDO			
PART #		USABLE CAPACITY*	DIMENSIONS
WITH FILTER	WITHOUT FILTER		
FT440COMP-F	FT440COMP-NF	440L	630H x 680D x 1240mm Long
FT440COMP-F1	FT440COMP-NF1	440L	680H x 630D x 1240mm Long
FT460COMP-F	FT460COMP-NF	460L	650H x 700D x 1240mm Long
FT460COMP-F1	FT460COMP-NF1	460L	700H x 650D x 1240mm Long
FT515COMP-F	FT515COMP-NF	515L	630H x 680D x 1400mm Long
FT515COMP-F1	FT515COMP-NF1	515L	680H x 630D x 1400mm Long
FT530COMP-F	FT530COMP-NF	530L	650H x 700D x 1400mm Long
FT530COMP-F1	FT530COMP-NF1	530L	700H x 650D x 1400mm Long

*Total volume of fuel and oil combined.



Oval Square Combination Tank with VDO, black brackets and stainless steel straps.



Oval Square Combination tank with pick up pipes, black brackets and stainless steel straps.

Round Combination Tanks with VDO & No Pick Up Pipes

PART #		USABLE CAPACITY*	DIMENSIONS
WITH FILTER	WITHOUT FILTER		
FT180COM-F	FT180COM-NF	180L	460 Ø x 1240mm Long
FT270COM-F	FT270COM-NF	270L	570 Ø x 1240mm Long
FT345COM-F	FT345COM-NF	345L	635 Ø x 1240mm Long
FT360COM-F	FT360COM-NF	360L	570 Ø x 1540mm Long
FT375COM-F	FT375COM-NF	375L	660 Ø x 1240mm Long
FT430COM-F	FT430COM-NF	430L	635 Ø x 1540mm Long
FT450COM-F	FT450COM-NF	450L	710 Ø x 1240mm Long
FT470COM-F	FT470COM-NF	470L	660 Ø x 1540mm Long
FT550COM-F	FT550COM-NF	550L	710 Ø x 1540mm Long

Round Combination Tanks with Pick Up Pipes & No VDO

PART #		USABLE CAPACITY*	DIMENSIONS
WITH FILTER	WITHOUT FILTER		
FT345COMP-F	FT345COMP-NF	345L	635 Ø x 1240mm Long
FT430COMP-F	FT430COMP-NF	430L	635 Ø x 1540mm Long
FT550COMP-F	N/A	550L	710 Ø x 1540mm Long

*Total volume of fuel and oil combined.



Round Combination Tank with black brackets and stainless steel straps.

Dangerous Goods Combination Tanks with Pick Up Pipes & No VDO**

PART #		USABLE CAPACITY*	DIMENSIONS
WITH FILTER	WITHOUT FILTER		
FT410COMDP-F	N/A	410L	660 Ø x 1350 mm Long
FT470COMDP-F	N/A	470L	660 Ø x 1540 mm Long

*Total volume of fuel and oil combined.

**Dangerous goods tanks are constructed to meet the New Zealand Tank Wagon Code and LPG Tank Wagon Code.

Dangerous Goods Combination Tanks with VDO & No Pick Up Pipes**

PART #		USABLE CAPACITY*	DIMENSIONS
WITH FILTER	WITHOUT FILTER		
FT270COMD-F	FT270COMD-NF	270L	570 Ø x 1240 mm Long
FT345COMD-F	FT345COMD-NF	345L	635 Ø x 1240 mm Long
FT375COMD-F	FT375COMD-NF	375L	660 Ø x 1240 mm Long
FT410COMD-F	N/A	410L	660 Ø x 1350 mm Long
FT450COMD-F	FT450COMD-NF	450L	710 Ø x 1240 mm Long
FT470COMD-F	N/A	470L	660 Ø x 1540 mm Long



Customised Combination Tanks.

Custom Combination Tank in primed Cradle Bracket.



AIR TANKS

ROADRUNNER ALUMINIUM AIR TANKS COMPLY WITH SAE J10 AND HAVE A RATED WORKING PRESSURE OF 160PSI/11BAR.

Our Air Tanks range from 10 to 50 litres. If this sizing doesn't suit your needs, we are happy to help design and custom build an aluminium air tank that does.

BENEFITS OF A ROADRUNNER AIR TANK

Quality control: Customers have the assurance that their air tanks meet compliance requirements and are safe to use. This means they have peace of mind around their purchase decision and can easily demonstrate value for money. They know they will not have to replace the product due to integrity concerns or faults.

Easy replication: Tanks can get damaged on trucks because of general usage/accidents. It can be costly because of time and import associated fees to have to replace them from overseas importers.

Roadrunner can easily replicate and turnaround a replacement tank to exactly match the original.

Safety assurance: Roadrunner air tanks are unique in the way that they control and support the brake system. This extra check and balance provides customers with an extra layer of reassurance around the performance of their tank and their truck. The design is complementary to what the truck braking system needs and will work in balance with it.



Round Air Tank with brackets.



Air Tank Specifications

PART #	VOLUME	DIAMETER	LENGTH*	PORTS
AT62	10 Litres	190mm	490mm	3/8" BSP each end, 1/4" BSP Drain
AT63	25 Litres	266mm	580mm	3/8" BSP LH end, 1 x 3/4" NPT, 1/4" BSP Drain
AT21	32 Litres	266mm	710mm	3/8" BSP LH end, 1 x 3/4" NPT, 1/4" BSP Drain
AT20	40 Litres	266mm	860mm	3/8" BSP LH end, 2 x 3/4" NPT, 1/4" BSP Drain
AT17	42 Litres	266mm	900mm	3/8" BSP each end, 3 x 3/4" NPT, 1/4" BSP Drain
AT18	47 Litres	300mm	820mm	3/8" BSP each end, 3 x 3/4" NPT, 1/4" BSP Drain
AT70	50 Litres	350mm	680mm	3/8" BSP each end, 3 x 3/4" NPT, 1/4" BSP Drain

*Note all lengths include mounting brackets which are 50mm each end.

Get a quote or place order:
[www.roadrunnerltd.co.nz](http://www.roadrunnerltd.co.nz/shop/air-tanks)
[/shop/air-tanks](http://www.roadrunnerltd.co.nz/shop/air-tanks)

WATER TANKS



ROADRUNNER CAN CUSTOM MANUFACTURE WATER TANKS TO SUIT YOUR NEEDS INCLUDING HAND WASH TANKS, STAINLESS STEEL DRINKING WATER TANKS AND LARGE VOLUME WATER TANKS UP TO 5,000 LITRES.

If our Water Tank sizing doesn't suit your needs, we are happy to help design and custom build an aluminium water tank that does.

BENEFITS OF A ROADRUNNER WATER TANK

Sanitary: Our water tanks mean customers have access to clean water and sanitation options wherever they are. They provide hassle-free access to clean water.

Light weight: Aluminium tanks are lighter and more durable than their plastic alternatives. They also have less environmental impact.

Affordable: People are often surprised by how affordable our water tanks are. They are often cheaper than plastic alternatives and - in addition - will likely last longer.

Water Tank Specifications*

PART #	DIAMETER	VOLUME	LENGTH
WT-01	190mm	11 Litres	440mm
WT-02	266mm	16 Litres	325mm
WT-03	266mm	20 Litres	400mm
WT-04	266mm	25 Litres	500mm

*Note all water tanks have brackets supplied loose.



Under deck mounted Water Tank WT-02.



Customised Water Tank.



WT-02 & WT-01 Water Tanks.

Get a quote or place order:
[www.roadrunnerltd.co.nz](http://www.roadrunnerltd.co.nz/shop/water-tanks)
[/shop/water-tanks](http://www.roadrunnerltd.co.nz/shop/water-tanks)



REFUELLING TANKS

ROADRUNNER REFUELLING TANKS ARE MANUFACTURED TO SUIT ANY APPLICATION AND ARE ENGINEERED FOR NEW ZEALAND ROAD CONDITIONS. WE CAN CUSTOM DESIGN THEM TO FIT ANY SPACE OR LOCATION ON YOUR TRUCK.

Roadrunner Refuelling Tanks are manufactured from 4mm aluminium and have a multitude of applications from; backs of utes, trailers and even slung under helicopters just to name a few. Our experienced craftsmanship ensures they are made to exceed the conditions they will be used in. A wide range of pump and accessory options from pump sizes and nozzle options coupled with a 4m delivery hose guarantees you are never let down in a sticky situation.

STANDARD SPECIFICATIONS

- Manufactured from 4mm aluminium
- 4M hose auto nozzle

ADDITIONAL OPTIONS

- Remote mount
- With or without clear bowl filter

BENEFITS OF A ROADRUNNER REFUELLING TANK

Flexible design: Our refuelling tanks are custom designed and can be made to fit unique spaces. They will fit wherever you need them to fit.

Match your existing profile: Roadrunner refuelling tanks can be made to match your existing vehicle profile to ensure a seamless aesthetic.

Customise your literage: This means that instead of trying to make a standard refuelling tank work to your needs you can have a product that meets your specific literage requirements.

Designed for New Zealand conditions: All our refuelling tanks are designed and manufactured here and are specific to New Zealand road and weather conditions.



Get a quote or place order:

www.roadrunnerltd.co.nz

[/custom-manufacturing/refuelling-tanks](http://www.roadrunnerltd.co.nz/custom-manufacturing/refuelling-tanks)

EFFLUENT TANK STORAGE



OUR TANKS ARE MANUFACTURED TO SUIT ANY APPLICATION AND ENGINEERED FOR NEW ZEALAND ROAD CONDITIONS. WE CAN CUSTOM DESIGN THEM TO FIT IN ANY SPACE OR LOCATION ON YOUR TRUCK.

Roadrunner tanks will meet standard design requirements as well as compliance requirements. Using one of our tanks means you can relax knowing that they will not leak or spill and that they are robust and load-bearing.

As custom engineering and manufacturing experts, Roadrunner Manufacturing can create both standard and custom effluent tanks. Each effluent tank can be created to your desired shape, size, and available space.

SPECIFICATION OPTIONS:

- 4mm or 5mm aluminium
- Shapes – any size
- Baffles
- Port locations and outlets customisable to your design
- Effluent valves (Jackson's and McKee's)
- Inspection hatches
- Mounting options to suit your design
- Pressure tested

Roadrunner Manufacturing are custom engineering experts. Whatever your needs, we can design a result to suit your requirements.



BENEFITS OF A ROADRUNNER EFFLUENT STORAGE TANK

Flexible design: Our tanks are custom designed and can be made to fit unique spaces. They will fit whenever you need them to fit.

They are hassle-free: You have the reassurance that our tanks will meet standard design (value) requirements as well as compliance requirements.

Designed for New Zealand conditions: All our tanks are designed and manufactured here and are specific to New Zealand road and weather conditions. They are durable and robust.

Easy replication: Tanks can get damaged on trucks due to general usage or accidents. It can be costly to replace them with overseas importers. Roadrunner Manufacturing can easily replicate and turnaround a replacement tank to exactly match the original.



Get a quote or place order:

www.roadrunnerltd.co.nz

[/custom-manufacturing/effluent-storage-tanks](http://www.roadrunnerltd.co.nz/custom-manufacturing/effluent-storage-tanks)

UTE & SERVICE BOXES



OUR SERVICE BOXES ARE CREATED TO SUIT THE SIZE OF YOUR TRUCK, UTE OR VAN AND ARE PURPOSE-DESIGNED TO SUIT YOUR APPLICATION.

AS EXPERTS IN CUSTOM ENGINEERING AND MANUFACTURING, ROADRUNNER CAN DESIGN AND BUILD:

- Ute canopies
- Flat decks
- Service boxes
- Service vehicle fit out's

Custom-design service boxes we have manufactured historically have also featured a range of design elements you may wish to consider including:

- Look through windows
- Built-in refueller
- Gull wing doors that open with gas stays
- Roller doors
- Hose reel
- Pump kit
- Powder coated

Our team also offers custom-made toolboxes for secure storage on your ute or truck.

BENEFITS OF A ROADRUNNER UTE AND SERVICE BOX

Secure and safe: All our service boxes are secure and have key lockable latches as part of the package at no extra cost.

Multiple design and storage options: The option to customise means that customers have the ability to design a product from scratch that meets their specs, solves their challenges and creates opportunities (instead of having to try to make a standard off-the-shelf product deliver for them).

Designed for New Zealand conditions: All our boxes are designed and manufactured here and are specific to New Zealand road and weather conditions. They are durable and robust and built to outlast them.

“ The team worked with my drawing and designed us a new service body which was completely custom designed and built. They were the only ones prepared to do this. They made it so easy to work with them. I told them upfront I needed it to work, to be robust and not to leak. They are a nice down to earth crew and immediately I trusted them with the job. Plus, this toolbox is so robust it will outlast this ute and be transferred to my next one. It's definitely future-proofed my investment! ”

Blair Adamson, Logweld Ltd

Get a quote or place order:
[www.roadrunnerltd.co.nz](http://www.roadrunnerltd.co.nz/custom-manufacturing/ute-boxes)
[/custom-manufacturing/ute-boxes](http://www.roadrunnerltd.co.nz/custom-manufacturing/ute-boxes)



Service Box with pull out draws.

DOG BOXES



ROADRUNNER DOG BOXES ARE CUSTOM BUILT TO SUIT THE SIZE OF YOUR TRUCK OR UTE AND ARE PURPOSE-DESIGNED TO MEET YOUR REQUIREMENTS EXACTLY.

Dog boxes are created exactly to your specification. Historically we have manufactured dog boxes for flat deck or well side utes as well as offered additional safety options including paw guards and ventilation hatches.

BENEFITS OF A ROADRUNNER DOG BOX

Customers are part of the build: Standard off-the-shelf dog boxes will likely not meet all of a customer's requirements and they will find themselves trying to make the 'best of it'.

Instead, Roadrunner can involve customers in the process throughout the whole journey to ensure their dog box is designed to meet current and future needs and that it will stand the test of time.

Multi-purpose: Dog boxes can be multi-purpose. Many standard off-the-shelf options cannot be tailored to exactly what you need from them. Roadrunner's dog boxes can also be used for storage and can be fitted and designed with flexibility in mind.

Compliant: Our boxes are compliant with all welfare regulations so customers are assured that animals are safe and will be comfortable in their surroundings.

Weatherproof: New Zealand's weather can be treacherous. It's important that dogs are transported safely and protected from the elements as much as possible. Our New Zealand made boxes are made with New Zealand conditions in mind.



A selection of some of our custom designed dog boxes.



Get a quote or place order:
[www.roadrunnerltd.co.nz](http://www.roadrunnerltd.co.nz/custom-manufacturing/dog-boxes)
[/custom-manufacturing/dog-boxes](http://www.roadrunnerltd.co.nz/custom-manufacturing/dog-boxes)

POOL COVER BOXES



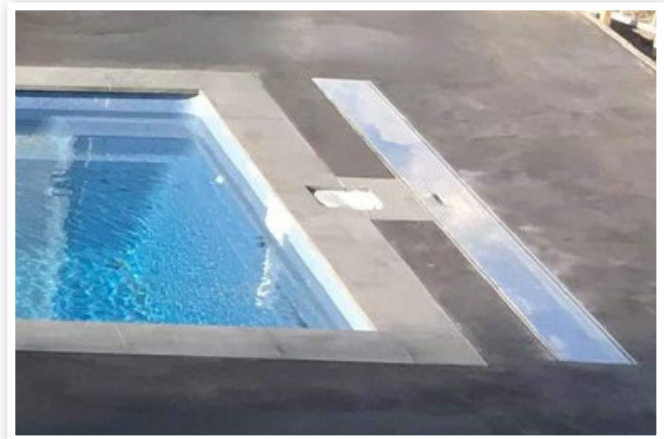
OUR EASY-TO-INSTALL STYLISH POOL COVER BOXES ADD VALUE TO EVERY POOL PURCHASE.

At Roadrunner Manufacturing, every Pool Cover Box is built to the specifications of your pool and designed to meet your requirements.

A Pool Cover Box will not only help to protect your pool cover and enhance longevity, but they also enhance the professional finish of your pool area, adding value to your pool asset and increase safety by reducing trip hazards.

STANDARD SPECIFICATIONS:

- Made up to size 410mm wide x 400mm high
- Made up to size 4500mm long (most popular length is 4000mm)
- Sealed 3mm aluminium box construction
- Hinged lid with gas stays to hold open/closed
- Manual/Winding mechanism
- Winding mechanism and roller available on its own for fittings below decks/under stairs
- Stainless steel bearings and fixings
- Stainless steel crank handle
- 2:1 right angle gearbox



BENEFITS OF A ROADRUNNER POOL COVER BOX

Flexible design: They can be made to a custom or standard size.

Easy to use: Roadrunner Pool Cover Boxes are easy to use and have a simple winding handle – anyone can use them!

Customisable: With a range of finishing options available including powder coating.

Enhances safety: Your pool area safety is enhanced as there are no trip hazards.

Seamless integration: Our Pool Cover Boxes are designed to be recessed in ground or below decks to be flush with ground level.

Robust and New Zealand made: Each Pool Cover Box is New Zealand made, with New Zealand sourced components by trade professionals.



Get a quote or place order:

www.roadrunnerltd.co.nz

/custom-manufacturing/pool-cover-boxes

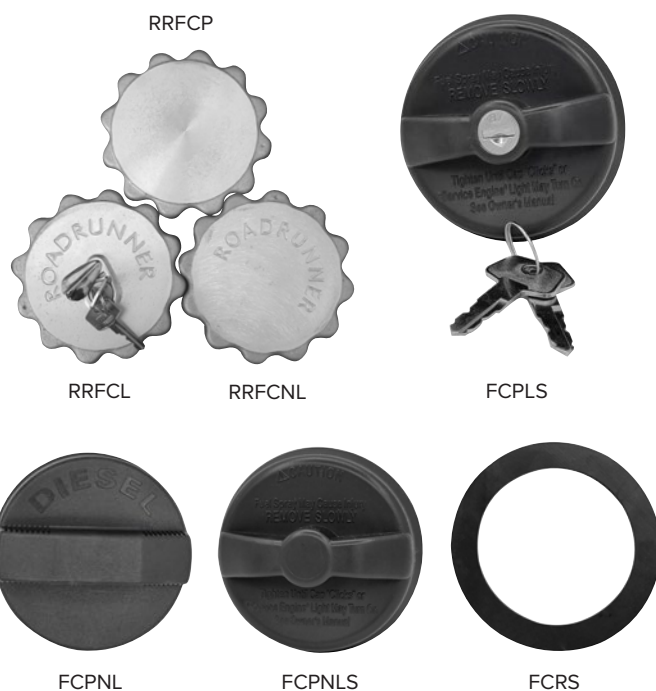
PARTS & ACCESSORIES



ROADRUNNER CAN CUSTOM-MAKE AND SELL AN EXTENSIVE RANGE OF PARTS AND ACCESSORIES.

Fuel Caps

PART #	DESCRIPTION
RRFCP	Roadrunner Non-Locking Fuel Cap Plain
RRFCL	Roadrunner Locking Fuel Cap
RRFCNL	Roadrunner Non-Locking Fuel Cap
FCPLS	2" Plastic Locking Fuel Cap Small
FCPNLS	2" Plastic Non-Locking Fuel Cap Small
FCPL	3" Plastic Fuel Cap Locking
FCPNL	3" Plastic Fuel Cap Non-Locking
FCRS	Fuel Cap Rubber Seal



FPTF1810



FPTF1025

Tank Top Filters

PART #	DESCRIPTION
FPTF1025	Tank Top Filter 3 stud 1 1/4" BSP
FPTF1810	Tank Top Filter 4 stud 1 1/4" BSP



TE53-3



TE53-4

Hydraulic Filters

PART #	DESCRIPTION
TE53-3	Hydraulic Filter Element for 3 stud Filter - FPTF1025
TE53-4	Hydraulic Filter Element for 4 stud Filter - FPTF1810



Level Temperature Gauge

PART #	DESCRIPTION
FTLG5	Level Temp Gauge

Get a quote or place order:
[www.roadrunnerltd.co.nz/
 shop/parts-accessories](http://www.roadrunnerltd.co.nz/shop/parts-accessories)

Filler Breathers

PART #	DESCRIPTION
FPFB2	Filler Breather Chrome
FPFB2L	Filler Breather Chrome Locking
FPFB3	Filler Breather Alloy



FPFB2



FPFB2L



FPFB3



GSA300



GSA400



GSA600

Gas Stays

PART #	DESCRIPTION
GSA100	Gas Stay 100mm Long
GSA300	Gas Stay 300mm Long
GSA400	Gas Stay 400mm Long
GSA500	Gas Stay 500mm Long
GSA600	Gas Stay 600mm Long

Licence Holders

PART #	DESCRIPTION
LH6	4" x 3" (100 x 75mm) Licence Holder - COF
LH7	6" x 4" (100 x 155mm) Licence Holder - VA
LH7-B	6" x 4" (100 x 155mm) Licence Holder (Blue) - VA
LH8	4" x 2" (100 x 60mm) Licence Holder - RUC
LH73	4" x 4" (100 X 100mm) Licence Holder - COF/RUC



LH6



LH7



LH7-B



LH8



LH73

Latches

PART #	DESCRIPTION
LT1WSS	Stainless Steel T-Handle 1 Way Drop Latch
TBFL	Trigger Flush Lock
L20ALFZ	Anti-Luce M12 x 20mm Thread Length (Zinc Plated)
L25ALFZ	Anti-Luce M12 x 25mm Thread Length (Zinc Plated)
L72ALFZ	Anti-Luce M12 x 72mm Thread Length (Zinc Plated)
L3648	Hold Down Latch Padlockable (Zinc Plated)
L3648-SS	Hold Down Latch Padlockable (Stainless Steel)



LT1WSS



TBFL

L25ALF2



L72ALFZ



L3648

BRACKETS & STRAPS



REPLACEMENT BRACKETS AND STRAPS AVAILABLE TO SUIT YOUR ROADRUNNER TANK OR TOOLBOX.

We have all the Bracket components you need to replace your existing mounting system or refurbish your project with a range of sizes or the ability to custom make to your requirements.

STANDARD SPECIFICATIONS:

- Brackets manufactured from 6mm mild steel
- Brackets are supplied primed grey
- Straps manufactured from 3mm polished stainless steel

BENEFITS OF ROADRUNNER BRACKETS AND STRAPS

Strong and Robust: Our Brackets and Straps are designed to meet New Zealand road requirements from a new one piece formed chassis.

Blank mounting wings: Will better align with the mounting constraints of a pre punched chassis and allows the mounting height to be adjusted.

Easy replication: If you sustain damage through and accident or you are doing a refurbishment a Roadrunner Bracket will fit with ease.

Roadrunner Brackets are already primed: Saving you time and money.

Value-add: A strong and robust design means added life and support for your tank to keep you working.

Replacement Parts	
PART #	DESCRIPTION
FT52S	S/S Tank Strap & Rubber - Straight to Straight
FT54S	S/S Tank Strap & Rubber - Eye to Straight
FT56S	S/S Tank Strap & Rubber - T Bar & Eye
FT57S	S/S Tank Strap & Rubber - T Bar to T Bar
FT58S	S/S Tank Strap & Rubber - T Bar to Straight
FTBR50	Replacement Strap Rubber (50mm)
FTBR75	Replacement Bracket Rubber - (75mm)



FTBR50



FR52S



FT56S



FT57S

Get a quote or place order:
[www.roadrunnerltd.co.nz](http://www.roadrunnerltd.co.nz/shop/brackets-straps)
[/shop/brackets-straps](http://www.roadrunnerltd.co.nz/shop/brackets-straps)

Fuel & Combination Tank Brackets	
PART #	DESCRIPTION
BSOS-B	Black Painted Oval Square Tank Bracket with S/S Strap
BSOS-P	Primed Oval Square Tank Bracket with S/S Strap
BSS-B	Black Painted Square Tank Bracket with S/S Strap
BSS-P	Primed Square Tank Bracket with S/S Strap
BSR380-460B	Black Painted 380-460 Diameter Round Tank Bracket with S/S Strap
BSR380-460P	Primed 380-460 Diameter Round Tank Bracket with S/S Strap
BSR570-710B	Black Painted 570-710 Diameter Round Tank Bracket with S/S Strap
BSR570-710P	Primed 570-710 Diameter Round Tank Bracket with S/S Strap
BS-CRADLEB	Black Painted Round Tank Cradle Bracket with S/S Strap
BS-CRADLEP	Primed Round Tank Cradle Bracket
BS-UNDER	Primed Round Tank Hoop Bracket



BSOS-P



BSS-B



BSR380-460P



BS-CRADLEB

Hydraulic Tank Brackets	
PART #	DESCRIPTION
HYTMB-B	Black Painted Single Mount Hydraulic Tank Bracket with S/S Straps
HYTMB-P	Primed Single Mount Hydraulic Tank Bracket with S/S Straps



HYTMB-P



HYTMB-P



HYTMB-P

Toolbox Brackets	
PART #	DESCRIPTION
TB-BRAC	Toolbox Channel Bracket Pair - Primed
TB-BRAC1	Toolbox Channel Bracket - Primed
TB-BRACEND	Toolbox End Bracket – Primed



TB-BRACEND

CUSTOM MANUFACTURING



ROADRUNNER SPECIALISES IN UNIQUE, ONE-OFF FABRICATION PROJECTS AND NEW PRODUCT DEVELOPMENT. OUR TEAM CAN PRODUCE A WIDE RANGE OF CUSTOM ALUMINIUM PRODUCTS OUTSIDE OF THE USUAL SCOPES OF SIZE AND SHAPE, AND OUR PRECISION WATERJET CUTTERS ALLOW US TO WORK WITH ACCURACY ON COMPLEX DESIGNS.

If you've got a custom aluminium product in mind, we can help.

EXAMPLES OF PAST PROJECTS

- Stationary fuel storage tanks
- Aluminium steps
- Custom trailer fitouts
- Lockable gas bottle storage units
- Jet ski trailers with storage box
- Side-by-side multi-purpose crates
- Tail doors with grain hatches
- Garden art
- Toolbox with removable draws



Double roller door locker box with hidden water tank and dunnage cage.

BENEFITS OF ROADRUNNER CUSTOM MANUFACTURING

The option to customise means that instead of trying to make a standard product work to your needs and having to compromise on some of them, you can have a product that solves your problems and meets all the specs and needs that you have in mind.

Uniqueness of design: Everything is bespoke and tailored to exactly what you need. This means no surprises, no trying to make it work for a slightly different purpose, no sizing or specification challenges and a clear idea of the outcome, for peace of mind with every purchase.

Design is never compromised: Our quality assurance and confidentiality means that no one else can access or use your design (without your knowledge or permission). If you have a design that's innovative and specific to your company that you believe gives you a competitive advantage, you can be assured that this design will not feature in any other company's production line or finished products. We are respectful of that confidentiality and would never breach it.

Get a quote or place order:
[www.roadrunnerltd.co.nz/
custom-manufacturing](http://www.roadrunnerltd.co.nz/custom-manufacturing)



RECENT PROJECT EXAMPLES





BESPOKE ALUMINIUM STORAGE A KEY COMPONENT IN DREAM CUSTOM MOTORHOME AND MAN TRUCK BUILD.

After 20 years in the mining business Allan Brown was interested in undertaking a long-term project which would fulfil his dream of living a flexible lifestyle, a highly functional yet comfortable mobile living space. From the outset Allan had a clear vision of what he wanted to achieve with his build and design specifications following four years of intensive research and planning.



After purchasing a **MAN TGM 13.250 cab** from Penske NZ and a Fruehauf trailer it was time to customise and kit out both components. As Allan envisioned living in the Fruehauf trailer/motorhome towed by the MAN Truck on a permanent basis, one of his key considerations in the functionality of his mobile living space was maximising storage within a limited area. He soon realised that a custom approach using aluminium storage compartments to meet his very specific requirements was the way to go.

Allan worked in the transport industry for a number of years and had used **Roadrunner Manufacturing** gear before, in a commercial capacity. He always found their gear extremely hard-wearing and able to handle the rigours of the road, so when it was time to address his need for custom aluminium fabrication, Roadrunner was his clear first choice.

Allan approached Steve at **Roadrunner Manufacturing** with an extremely well-prepared concept, layout, and design brief. The groundwork was done but Allan really appreciated their understanding of his vision and attention to detail when briefing the project. Roadrunner quoted Allan for a fuel tank, a range of custom storage boxes and the brackets to mount them on both truck and trailer. After such a positive initial experience it was an easy decision for Allan to commission Roadrunner to complete the job.

Allan felt confident in Roadrunner Manufacturing from the beginning.

“Dealing with Steve Tunnicliffe and the team at Roadrunner was a fantastic experience from start to finish. Steve was friendly and helpful right from the start, he seemed genuinely enthusiastic and excited to take on an interesting project which reassured me I had made the right choice. When you get that sort of reaction from an initial meeting with someone you know that you will be looked after and there will be a good outcome.”



The various custom built storage compartments strategically placed on Allan's truck/motorhome build.



Allan and Gemma enjoying dinner outside their finished custom built MAN Truck and Motorhome.

Allan reflects on his positive experience and outcome with Roadrunner Manufacturing:

“Roadrunner’s service and expertise throughout the process was outstanding and the final product was even better than I imagined.”

Allan found the communication with Steve highly consistent; this made the project run on schedule and allowed the storage compartments to be completed seamlessly. The final result exceeded Allan’s expectations and enabled him to store all his utilities as well as extras, like a Weber BBQ.

The service from Roadrunner Manufacturing did not stop once their part of the project was complete. On completion of their customised MAN Truck and Motorhome Allan and partner Gemma undertook a “thank you tour” to visit all the parties who contributed to making their dream a reality.

When they arrived in Bulls, Roadrunner offered a free test and service of all their gear on the unit to make sure everything was working properly.

Naturally, Allan gets a lot of questions from people when out on the road and in holiday parks, the finished MAN Truck and Motorhome is also featured in Motorhome, Caravan & Destinations Magazine. He is now living his dream and is out exploring all that New Zealand has to offer.



OMAX ABRASIVE WATERJETS

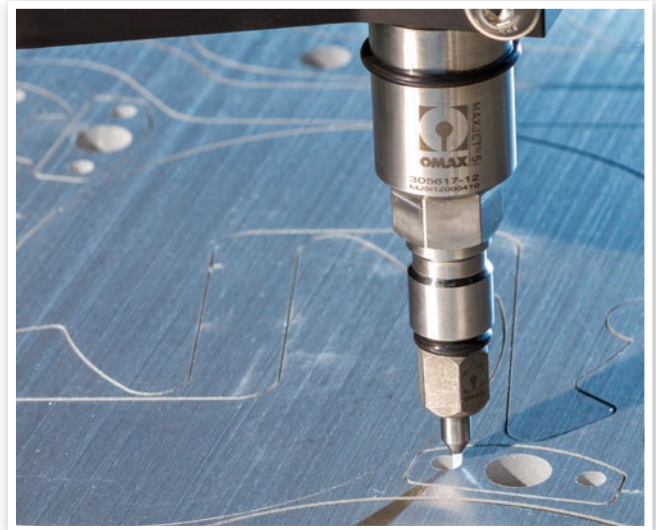


ABRASIVE WATERJET CUTTERS USE A HIGH-PRESSURE STREAM OF WATER AND ABRASIVE TO CUT VIRTUALLY ANY MATERIAL UP TO AN IMPRESSIVE 300MM THICK, AND OFFER A LOW-COST, SAFE AND ENVIRONMENTALLY FRIENDLY ADDITION TO ANY DESIGN OR MANUFACTURING FACILITY.

Roadrunner are the sole New Zealand distributor for the **OMAX** range of waterjets. **OMAX** are a world leader in the waterjet industry. We have used these machines in our own workshop for over 16 years and have a wide range and size of waterjets available to suit every purpose.

GENERAL BENEFITS

- A faster manufacturing process
- The ability to easily cut plastic, steel, alloy, glass, stone, concrete, foam and rubber
- Create intricate parts and shapes that are difficult to cut using traditional thermal cutting methods
- Easy setup and accurate, efficient cutting
- Zero thermal distortion to intricate parts and no heat affected zones
- Cost efficiencies - low waste costs when cutting an expensive material
- No need for secondary machining
- No toxic gases released in cutting process



BENEFITS OF A ROADRUNNER ABRASIVE WATERJET

Efficiency: OMAX waterjet cutting machines are the fastest cutting waterjet pump around. Time studies have also indicated that they are the best in the industry. This means that customers can be assured that investment in a waterjet cutter will support their bottom line and productivity.

Flexibility and versatility: Abrasive waterjet cutters can cut almost anything (apart from toughened glass) which means that business owners can use their machine for almost anything. They are intuitive, easy to use and can be applied to anything – which also boosts creativity.

Relationships and communications: The same person who sold you the machine will also service your machine, help you set up your machine and be your main point of contact. This means that the relationship

is paramount and that customers are reassured that they will not be left stranded in situations where there might be a product concern or when someone is learning the process.



Roadrunner technicians are fully trained to offer expert advice, knowledge, installation and aftersales support. Find out more about waterjets and the options available on our website or give us a call and our team will help you find the right machine for your intended application.

Learn more or enquire:
[www.roadrunnerltd.co.nz/
waterjets](http://www.roadrunnerltd.co.nz/waterjets)

OMAX ABRASIVE WATERJET RANGE

PROTOMAX

MAXIEM[™]
WATERJETS

globalMAX

OptiMAX



OMAX[®]



“ Right from the start we’ve had such an amazing relationship with the Roadrunner team. We knew we would likely need to source a waterjet from overseas and having the Roadrunner guys on the ground in New Zealand and their expertise with OMAX products made the whole process very easy. We have sourced other machinery and components from overseas in the past and had issues with servicing and parts, from the outset we knew we could trust Roadrunner to provide a machine and the aftercare which would ensure us continuous production. ”

Jane Warren, Dixon Manufacturing

“ We purchased a MAXIEM 1530 ten years ago and have never looked back. In fact, two years ago we purchased our second waterjet cutting machine, a MAXIEM 2040, and we are confident it will deliver against all expectations. ”

Pauline and Jason Gregory, Gregory Engineering



HIGH-PERFORMANCE INDUSTRIAL MACHINES THAT CAN LITERALLY CUT ANYTHING

Matt Melton had always wanted to start his own business.

It's been an exciting journey to the successful CNC precision cutting business that he now manages and directs using OMAX abrasive waterjet cutting machines.

AcuCut began as an idea that formed during his time working as an engineer on super yachts. He found himself admiring the precision parts of those boats and discovered that they were often the result of abrasive waterjet cutting.

After spending considerable time researching waterjet cutting, he decided it was a market that really excited him and also one that presented an interesting opportunity. Matt decided he wanted to learn how to do waterjet cutting and the rest is history. He learned the CNC engineering trade and became an expert himself

on the operation of these machines. He has been a loyal **OMAX** customer ever since then and absolutely asserts the integrity of these machines.

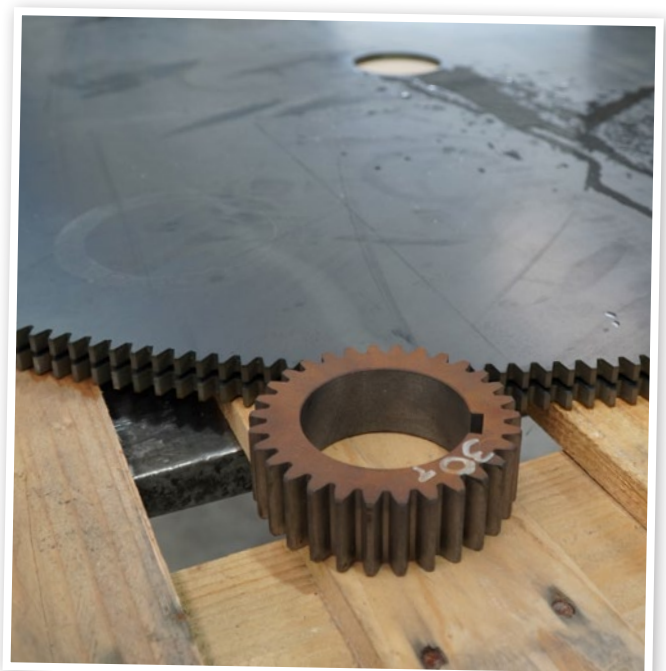
His journey with **Roadrunner Manufacturing** actually began three years before he purchased his first machine. He heard about a firm called **Roadrunner Manufacturing** based out of Bulls in Manawatu who were the distributors of **OMAX** waterjets and decided to get in touch. He's the first to admit that purchasing an abrasive waterjet cutter is a sizeable investment. He needed time to gather funds and find a commercial space to locate the machine.

Machine reliability and capacity enables business owner to secure return on investment beyond expectations

He'd set his heart on an **OMAX 60120** and, once purchased, it's first home was his parent's humble farm workshop.

"I bought the OMAX 60120 because it could handle standard size sheets and because it was the biggest machine, I could fit in the space I had available. I chose OMAX over a Maxiém because I wanted a more industrial high-performance machine. Durability and reliability were paramount and I knew that this machine had potential to deliver above and beyond my expectations."

Now, nearly eight years on, Matt owns four machines and has moved out of his parent's workshop! He purchased his own a couple of years ago and now has a additional two second hand **OMAX waterjet machines**, a **2626** and another **60120**. One of the great aspects about **OMAX** as a company is that they don't design their machines to 'go out of date'. All of the machinery accessories are upgradable which means the machines remain current and reliable. Every customer can be assured, that a machine they bought ten years ago will still have replaceable or upgradable parts when they need them.



Large gears cut on the waterjet.

“This is important as a business owner as you know your investment is sound.”

When asked about why an abrasive waterjet made sense for his business, Matt shared that its point of difference is that it can cut anything - literally anything - apart from toughened glass. This means that you can switch between materials in a matter of minutes and the cut is clean and precise with hardly any edge cleaning required. Matt was delighted to discover that the machine could cut even weathered pre-rusted steel and this has now become a regular aspect of the business he delivers.

Faultless service delivery means no stress and reduced risk to business

Another reason that OMAX just makes business sense is their service. He can't fault it.

“The service from the team (Roadrunner Manufacturing and OMAX) is incredible. In all these years, I've only ever had a couple of small standard issues and they were just things that wore out which you'd expect. Roadrunner have been awesome, especially when I first started out and need support with installing the software. Initially it can seem overwhelming but the support you get from all of the team takes all of that overwhelm away. Its actually really quick to get used to.”

Now established as an experienced manufacturer producing a range of different CNC Waterjet cut signs and precision products, Matt recommends



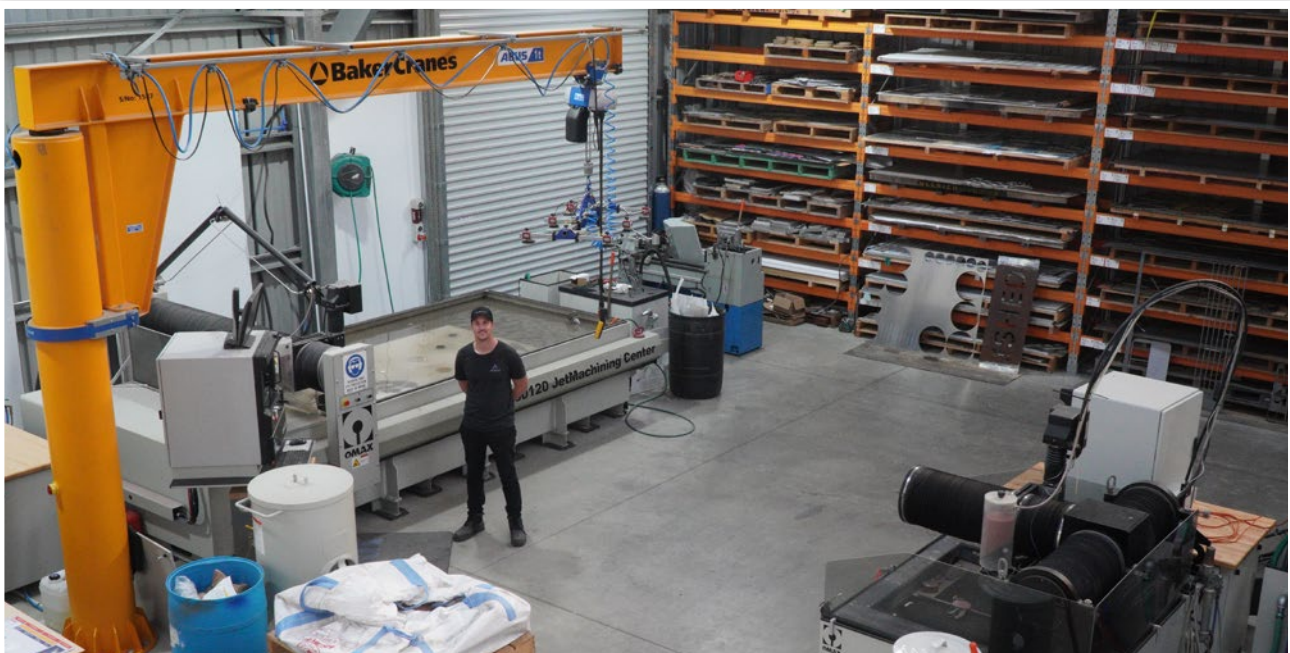
Copper gasket, precisely traced and cut to match original.

that anyone else who is starting out on their journey to purchase an abrasive waterjet cutter takes their time and does their research.

He's never looked back and would recommend an OMAX to anyone taking this journey.

“I'd recommend calling Roadrunner Manufacturing – Matt and Nick are great guys and they'll offer advice and help you to choose between the range of machines that OMAX offer and make sure you make the best choice for your business.”

Eight years on AcuCut have grown as a business in size but also in scope and their waterjet cutting machines are at the heart of that growth.



Proud AcuCut Owner Matthew Melton standing with his first Omax Waterjet.



NOTES

[illegible]



OMAX®

A Hypertherm Associates Brand

53 Bridge Street, Bulls,
Manawatu, 4818
(06) 322 1575

info@roadrunnerltd.co.nz

www.roadrunnerltd.co.nz